

# The Echelford Echo



Friday 27<sup>th</sup> September 2019

Weekly Issue Number 04

It has been another busy week at Echelford. Year 4 children braved the weather at the start of the week and went on a successful walk around Ashford for their geography topic. 6S held our first class assembly of the year and KS2 children were transported back to WW2 where they learnt about evacuation and rationing. The children had made a video which they shared with the school and are clearly enjoying learning about this period in history.

We have now begun our Reception parent tours for children looking to join us next September. It is always a lovely opportunity to share the school and learning with new families. If you know of anyone looking for a place please do let them know our tours have started as they are already quite booked up.

## Year 4 Local Walk of Ashford



On Monday, the pupils in Year 4 set off on a local walk of Ashford to kick-start their exciting Geography learning. The children were required to spot features in the local area such as churches, parks and memorials; they then plotted these onto their very own maps of Ashford by coming up with symbols for each feature.

Although the weather was a little unpredictable, each class enjoyed exploring the local area and many members of the public



commented on how polite the children were. We are now excited to see how their Geography learning develops as they begin to explore the use of maps, compasses and symbols. Well done for representing the school so brilliantly, Year 4.

## Echelford Authors - Autumn Writing Competition



We are delighted to launch this term's writing competition, open to any child at Echelford Primary School. Use the image (left) to inspire a story of up to 500 words, which can be typed or handwritten. Upload your story using the link below, either by pasting the typed story, or scanning the written story and uploading the file. Sadly, only one entry can be submitted per child, and the deadline is Sunday 13<sup>th</sup> October.

<http://bit.ly/ECHELAUTHORaut1>

After the deadline, the stories will be judged in-house and one winner will be chosen from each year group. They will win a prize, and have their story published on the school website. Start imagining, and happy writing! Mr Lockyer & Miss Enright.

## ABM Catering Competition

This year our catering company ABM are running their annual pumpkin carving competition prior to Halloween. If your child would like to take part please see details on the flyer attached to the end of this newsletter.

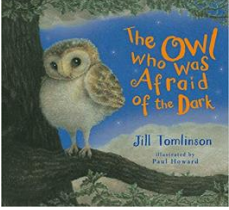

## Parent/Carer Appreciation Letters

Coming home with your child today is a form entitled 'Parent/Carer Appreciation' which captures all the things you like and admire about your child, as well as their strengths, talents and interests as noticed by you. It also includes a box for you to share your opinions about the best way to support your child in school with their learning or socially. Due to the success and usefulness of your comments in previous years, we would like to collect views from the important people in your children's lives again this year. We would really appreciate you completing and returning this to your child's class teacher by **Friday 11<sup>th</sup> October** so that your views can be used, along with other information collected from your child, to create their profiles and personalise the learning experience in school. If you have any questions regarding this please feel free to talk to your child's class teacher.

## Book of the week – Get your hands on a good book

Each week you will find here recommended reading for both KS1 and KS2. This is intended to provide our Echelford families with inspiration for daily home reading.

## Reading Recommendations

KS1	KS2
	
<p>The Owl Who Was Afraid of the Dark Jill Tomlinson</p>	<p>Journey to Jo'burg Beverley Naidoo</p>

### Achievements outside of school

If your child would like to celebrate success within the school community, please inform your class teacher or the office staff of your news.

### External Agencies

Please find a selection of flyers at the end of this newsletter.

### PTA INFORMATION

Read on for more details about..... class reps, silent disco, lottery and a pantomime!

**\*\*DATE CORRECTION\*\* Mufti Day will NOT take place on Friday 18<sup>th</sup> October** as previously advertised. We will let you know when another date has been confirmed.

#### Class Reps

You can see who is your Class Rep on the "Who's Who" page on the website. These details are also pinned up on the notice boards. <https://www.echelfordprimary.co.uk/page/?title=Who%27s+Who+in+our+PTA&pid=126>

#### Friday 18<sup>th</sup> October: Silent Disco

After school on Friday 18<sup>th</sup> October, the PTA is hosting three silent discos: Reception and Year 1 from 3:30-4:30pm, Years 2 and 3 from 5-6pm and Years 4, 5 and 6 from 6:30-7:30pm. Thank you to everyone who has returned their forms and payment so far – all children have been allocated a place. For anyone still to respond, please return the form and cash payment of £3 per child to the PTA post box by Friday 11<sup>th</sup> October to book your child's space and inform us if you are able to help out (hard copies are available from the school office). There will be no snacks, but water will be provided.

Reception and Year 1 children will be taken directly to the hall at the end of the school day by school staff. Year 2, 3, 4, 5 and 6 children should be dropped off through the dining hall doors on the KS2 playground.

Collection is from the Gym doors on the KS2 playground between 4:30-4:45pm (Reception and Year 1), 6:00-6:15pm (Years 2 and 3) and at 7:30pm (Years 4, 5 and 6). We have given a longer pick up time for the first two sessions so that those of you picking up and dropping off do not have to wait around for too long.

#### Echelford School Lottery: First Draw on Tuesday 15<sup>th</sup> October

If you wish to participate in the Echelford School Lottery, please return your form and payment of £10 by Monday 14<sup>th</sup> October. Each entrant will be allocated a number which stays with you for the duration of the lottery. The winning number drawn will receive 50% of the funds taken that month, with the remaining 50% gifted to Echelford. The first draw takes place on 15<sup>th</sup> October, and the more numbers that are bought (and any entrant can buy more than one number if they wish), the higher the prizes - so please spread the word and encourage as many people as possible to purchase numbers. Hard copies of the form are available from the school office or you can print from last week's newsletter.

#### Echelford Pantomime: Saturday 30<sup>th</sup> November, 1-3pm and 5-7pm

It's panto time! Oh, no it isn't! Oh, yes it is! We are pleased to host Chaplins Pantos who will be performing the enchanting tale of Jack and the Beanstalk at our school. There will be two performances on Saturday 30<sup>th</sup> November, 1pm and 5pm: each show lasts two hours (including an interval). Packed solid with comedy, excitement and adventure, the children will love to cheer their hero Jack and boo the evil Mayor Botchett. They will roar with laughter at the antics of Barmy Bosworth and Dimples the cow as they try to get the better of the comic dame, Mrs Lumpkin.

Tickets are £7 per person and you can invite friends, family, neighbours, anyone who enjoys a pantomime! These shows are for you to attend with your children; no unattended children will be admitted. Spaces are limited, so please ensure you return the attached form (hard copies also available from the school office) and cash payment to the PTA box in an envelope marked "PTA Panto". Refreshments will be available to purchase before the shows and during the interval.

### How You Can Get Involved

Please drop us an email if you have any questions, or are interested in taking on a more active role within the Committee or as Class Representative, our email address is [pta.echelford@lumenlearningtrust.co.uk](mailto:pta.echelford@lumenlearningtrust.co.uk) or you can drop a note into the PTA mailbox by the school office.

## Learning and Behaviour celebrations

### Sports awards

The following children have been awarded the sports star certificate this week based on their level of participation, effort, sportsmanship and general attitude.

<b>RB</b>	Mary	<b>2J</b>	Lola	<b>4R</b>	Kasjan & Roman
<b>RC</b>	Indigo	<b>2WM</b>	Zack	<b>5J</b>	Bonnie
<b>RS</b>	Georgina	<b>3D</b>	Scott	<b>5M</b>	Amreet
<b>1G</b>	Preston	<b>3E</b>	Isabella	<b>5W</b>	Freya
<b>1HB</b>	Daniel	<b>3L</b>	Noah	<b>6G</b>	Harry
<b>1L</b>	Riley	<b>4A</b>	Daisy	<b>6L</b>	Sirida
<b>2C</b>	Hari	<b>4B</b>	Poppy	<b>6S</b>	Liam

### Literacy Masters

The following children have been celebrated last week for their writing. Their work has been displayed prominently within school.

<b>RB</b>	Isabella	<b>2J</b>	Deben	<b>4R</b>	Darcie
<b>RC</b>	Consent to publish name not given	<b>2WM</b>	Ellie	<b>5J</b>	Ava
<b>RS</b>	Lennie	<b>3D</b>	Ricardo	<b>5M</b>	Consent to publish name not given
<b>1G</b>	Sophia	<b>3E</b>	Alex	<b>5W</b>	Kaylie
<b>1HB</b>	Oscar	<b>3L</b>	Ghavan	<b>6G</b>	Darcie
<b>1L</b>	Daisy	<b>4A</b>	Phoebe	<b>6L</b>	Scarlett
<b>2C</b>	Tommy	<b>4B</b>	Frankie	<b>6S</b>	Emily

### Maths Masters

We congratulate all of our Mathematics Masters certificate winners from last week.

<b>RB</b>	Consent to publish name not given	<b>2J</b>	Liliana	<b>4R</b>	Riley
<b>RC</b>	Milly	<b>2WM</b>	Freya	<b>5J</b>	Hannah
<b>RS</b>	Dylan	<b>3D</b>	Dudley	<b>5M</b>	Taha
<b>1G</b>	Reggie	<b>3E</b>	Tristan	<b>5W</b>	Harry
<b>1HB</b>	Mason	<b>3L</b>	Naomi	<b>6G</b>	Jessica
<b>1L</b>	Elijah	<b>4A</b>	William	<b>6L</b>	Jocelyn
<b>2C</b>	Shanie	<b>4B</b>	Alfie	<b>6S</b>	Scarlett

### Jigsaw Award

The following children have been awarded the Jigsaw award this week based on their exemplary PSHE learning.

<b>RB</b>	Thomas	<b>2J</b>	Bachir	<b>4R</b>	James
<b>RC</b>	Samuel	<b>2WM</b>	Jessica	<b>5J</b>	Ethan
<b>RS</b>	Tamera	<b>3D</b>	Teach	<b>5M</b>	Sam
<b>1G</b>	Grace	<b>3E</b>	Leyla	<b>5W</b>	Madison
<b>1HB</b>	Elizabeth	<b>3L</b>	Mason	<b>6G</b>	Aditi
<b>1L</b>	Erin	<b>4A</b>	Jaidev	<b>6L</b>	Volodymyr
<b>2C</b>	Imogen	<b>4B</b>	Holly	<b>6S</b>	Hannah

### Gold Leaf Achievers

Special congratulations to Imogen, Isaac, Sam, Ethan, Henry, Charlie, Junior Jay, Libby, Sophie, Chloe, Freya, Harvey, Grace, Sienna, Amelia, Caitlyn, Ema, Evie, Olivia, Jessica, Kayleigh, Jake, Martha, Alfie, Henry, Henry, Bobby, Holly, Bonnie, Paulina, Thea, William, Dylan, Poppy, Jaya, Myla-Rose, Emmilija, Monika, Tommy, Aylin, Sudeepti, Amelia, Alex, Molly, Lucas, Hrithvik and Amy-Alison who have all received a gold leaf this week.

*Uale Pearson*

**Dates for 2019 – 2020**

<b>October</b>		
Wednesday 2 <sup>nd</sup>	9am	2J Class Assembly
Monday 7 <sup>th</sup>	2.15- 3pm	EYFS Stay and Learn
Tuesday 8 <sup>th</sup>	2.15- 3pm	EYFS Stay and Learn
Wednesday 9 <sup>th</sup>	2.15- 3pm	EYFS Stay and Learn
Wednesday 9 <sup>th</sup>	9am	6G Class Assembly
Friday 11 <sup>th</sup>	After school	Year R cake sale
Wednesday 16 <sup>th</sup>	9am	2C Class Assembly
Friday 18 <sup>th</sup>	After school	PTA Silent Discos
Tuesday 22 <sup>nd</sup>	4-7.30pm	Parent teacher consultations
Wednesday 23 <sup>rd</sup>	3.30pm-6pm	Parent teacher consultations
<b>Mon 28<sup>th</sup> – Fri 1<sup>st</sup></b>		<b>Half Term</b>
<b>November</b>		
Mon 4 <sup>th</sup> – Fri 8 <sup>th</sup>	After school each day	Book Fair
Wednesday 6 <sup>th</sup>	9am	6L Class Assembly
Tuesday 12 <sup>th</sup>	3.30pm	KS2 Parent Workshops
Wednesday 13 <sup>th</sup>	9am	2WM Class Assembly
Tuesday 19 <sup>th</sup>	9.15- 10am	EYFS Stay and Learn
Wednesday 20 <sup>th</sup>	9.15- 10am	EYFS Stay and Learn
Thursday 21 <sup>st</sup>	9.15- 10am	EYFS Stay and Learn
Wednesday 20 <sup>th</sup>	9am	3L Class Assembly
Friday 22 <sup>nd</sup>	After school	Year 1 cake sale
Saturday 30 <sup>th</sup>	1- 3pm & 5- 7pm	PTA pantomime
<b>December</b>		
Wednesday 4 <sup>th</sup>	2.15pm	EYFS nativity
Thursday 5 <sup>th</sup>	9.15am	EYFS nativity
Wednesday 11 <sup>th</sup>	2pm	KS1 nativity
Thursday 12 <sup>th</sup>	9.15am	KS1 nativity
Monday 16 <sup>th</sup>	6pm	KS2 Christmas Concert
Tuesday 17 <sup>th</sup>	2pm	KS2 Christmas Concert
Tuesday 17 <sup>th</sup>	6pm	KS2 Christmas Concert
Wednesday 18 <sup>th</sup>	9am	Headteacher Assembly
<b>Friday 20<sup>th</sup></b>	<b>1.45pm</b>	<b>End of Term</b>
<b>January 2020</b>		
Monday 6 <sup>th</sup>		Children return to school
Monday 13 <sup>th</sup>		EYFS Stay and Learn
Tuesday 14 <sup>th</sup>		EYFS Stay and Learn
Wednesday 15 <sup>th</sup>		EYFS Stay and Learn
Wednesday 15 <sup>th</sup>	9am	4A Class Assembly
Friday 17 <sup>th</sup>	After school	Year 2 cake sale
Wednesday 22 <sup>nd</sup>	9am	5J Class Assembly
Wednesday 29 <sup>th</sup>	9am	4B Class Assembly
<b>February</b>		
Wednesday 5 <sup>th</sup>	9am	3E Class Assembly
Wednesday 12 <sup>th</sup>	9am	1G Class Assembly
Friday 14 <sup>th</sup>		INSET Day
<b>Mon 17<sup>th</sup> – Fri 21<sup>st</sup></b>		<b>Half Term</b>
Mon 24 <sup>th</sup> – Fri 28 <sup>th</sup>		Y6 Residential Bristol
Friday 28 <sup>th</sup>	After school	Year 3 cake sale
<b>March</b>		
Wednesday 4 <sup>th</sup>	9am	4R Class Assembly
Friday 6 <sup>th</sup> March		Year 3 Sleepover
Monday 9 <sup>th</sup>		EYFS Stay and Learn
Tuesday 10 <sup>th</sup>		EYFS Stay and Learn
Wednesday 11 <sup>th</sup>		EYFS Stay and Learn

Wednesday 11 <sup>th</sup>	9am	1L Class Assembly
Wednesday 18 <sup>th</sup>	9am	1H Class Assembly
Fri 20 <sup>th</sup> – Sun 22 <sup>nd</sup>		Y5 Residential Bowles
Tuesday 24 <sup>th</sup>	4pm- 7.30pm	Parent teacher consultations
Wednesday 25 <sup>th</sup>	3.30pm-6pm	Parent teacher consultations
Friday 27 <sup>th</sup>	After school	Year 4 cake sale
<b>April</b>		
Wednesday 1 <sup>st</sup>	9am	Headteacher Assembly
<b>Friday 3<sup>rd</sup></b>	<b>1.45pm</b>	<b>End of Term</b>
Monday 20 <sup>th</sup>		Children return to school
Friday 24 <sup>th</sup>	After school	Year 5 cake sale
Wednesday 29 <sup>th</sup>	9am	3D Class Assembly
<b>May</b>		
Wednesday 6 <sup>th</sup>	9am	RB Class Assembly
Thursday 7 <sup>th</sup>		Polling Day
Friday 8 <sup>th</sup>		May Bank Holiday
Monday 11 <sup>th</sup>		EYFS Stay and Learn
Tuesday 12 <sup>th</sup>		EYFS Stay and Learn
Wednesday 13 <sup>th</sup>		EYFS Stay and Learn
Mon 4 <sup>th</sup> – Fri 22 <sup>nd</sup>		KS1 SATs Period
Mon 11 <sup>th</sup> – Thurs 14 <sup>th</sup>		KS2 SATs week
Mon 18 <sup>th</sup> – Fri 22 <sup>nd</sup>	After school each day	Book Fair
Wed 20 <sup>th</sup> – Fri 22 <sup>nd</sup>		Year 4 Rise Up Festival
Wednesday 20 <sup>th</sup>	9am	RC Class Assembly
<b>Mon 25<sup>th</sup> May – Fri 29<sup>th</sup></b>		<b>Half Term</b>
<b>June</b>		
Wednesday 3 <sup>rd</sup>	6pm	EYFS new parents meeting
Wednesday 10 <sup>th</sup>	9am	5M Class Assembly
Wednesday 17 <sup>th</sup>	9am	RS Class Assembly
Thursday 18 <sup>th</sup>	EYFS/ KS1: 9.30am KS2: 1.30pm	Sports Day
Monday 22 <sup>nd</sup>		EYFS taster sessions
Tuesday 23 <sup>rd</sup>		EYFS taster sessions
Wednesday 24 <sup>th</sup>		EYFS taster sessions
Wednesday 24 <sup>th</sup>	9am	5W Class Assembly
Friday 5 <sup>th</sup> June	After school	Year 6 cake sale
<b>July</b>		
Monday 6 <sup>th</sup>		EYFS Stay and Learn
Tuesday 7 <sup>th</sup>		EYFS Stay and Learn
Wednesday 8 <sup>th</sup>		EYFS Stay and Learn
Wednesday 8 <sup>th</sup>	6.30pm	Year 6 production
Thursday 9 <sup>th</sup>	6.30pm	Year 6 production
Wednesday 15 <sup>th</sup>	9am	Headteacher Assembly
Thursday 16 <sup>th</sup>	6pm	Leavers Disco
Friday 17 <sup>th</sup>	9am	Leavers Assembly
<b>Friday 17<sup>th</sup></b>		<b>End of term</b>
<b>Mon 20<sup>th</sup> – Wed 22<sup>nd</sup></b>		<b>INSET</b>

# We want to see your 'Spooktacular' Halloween Pumpkins!

---

## OUR HALLOWEEN PUMPKIN CARVING COMPETITION IS BACK!

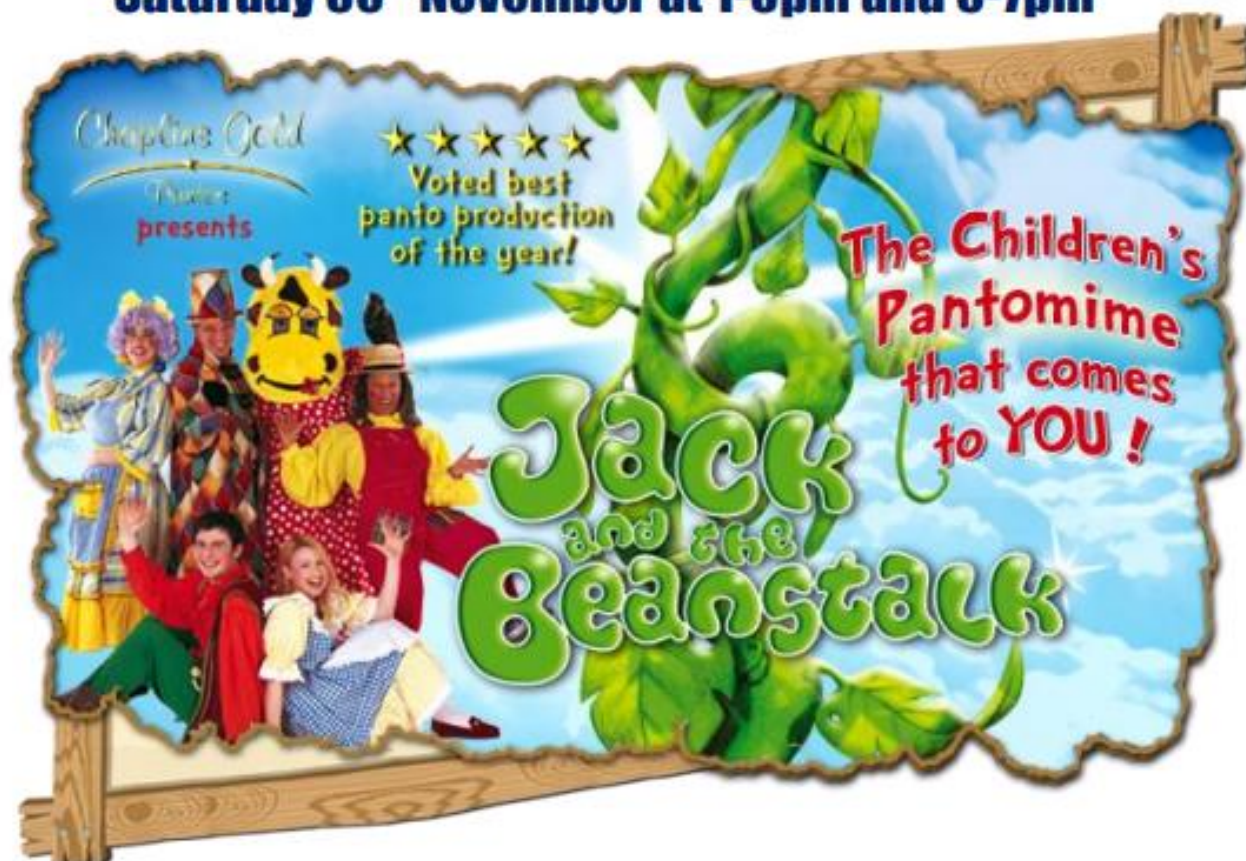
To enter grab a pumpkin, carve your design and send us a picture and you could be in with a chance of winning a selection of fantastic board games.

Entries should be emailed to [pumpkins@abmcatering.co.uk](mailto:pumpkins@abmcatering.co.uk) by no later than Monday 4th November. Remember to include your name and the name of your school.

**Design it. Carve it. Snap it!**



**Echelford PTA and Chaplins Pantos presents**  
**on**  
**Saturday 30<sup>th</sup> November at 1-3pm and 5-7pm**



Fun for all! Invite friends and family to attend one of the two hour (including interval) pantomimes where you will be transported to the magical setting of Pantoland to meet Jack and all his friends. Refreshments will be available to purchase before the shows and during the interval. No unattended children will be admitted.

Places are limited so please return the form below and cash payment of £7 per ticket to the PTA post box in the school office in an envelope marked PTA "Panto" as soon as possible (printed copies are available in the school office). Tickets will start being sent home with children from 11<sup>th</sup> November.

**Ticket Request for the Pantomime on Saturday 30<sup>th</sup> November**

Contact Name: \_\_\_\_\_

Contact Number: \_\_\_\_\_

Child's Name: \_\_\_\_\_ Child's Class: \_\_\_\_\_

Write in the box the number of tickets required for each performance: 1-3pm

5-7pm

Cash payment enclosed (£7 per ticket): £\_\_\_\_\_