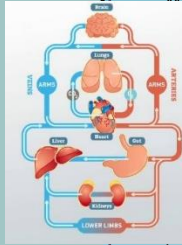


Year 6 Spring 2 Ancient Maya



Key Words:

- Circulatory System
- Heart
- Blood vessels
- Blood
- Veins
- Arteries
- White blood cells
- Red blood cells
- Nutrients
- Shema
- Torah
- Synagogue
- Yom Kipper
- Ten Commandments
- Maya/Mayan
- Ancient civilisations
- Armature
- Moulded
- Modroc
- Variables



Science:

The heart pumps blood in the blood vessels to the lungs where oxygen goes into the blood and carbon dioxide is removed. The blood goes to the heart. It is then pumped around the body so that water, nutrients and oxygen are transported in the blood to the muscles and other parts of the body where they are needed. As all these are used, they produce carbon dioxide and other waste products. Carbon dioxide is carried by the blood in blood vessels back to the heart. The cycle starts again as the Carbon Dioxide is transported back to the lungs to be removed from the body.

Prescribed drugs can be used to keep your body healthy. Recreational drugs such as alcohol and nicotine can damage your health.

Nutrients and water are absorbed in the system in the stomach, small and large intestines. They enter the blood stream via the capillaries where they are passed through to the arteries.

French

1. Je regarde la télé
2. Je fais de la danse
3. J'écoute de la musique
4. Je lis
5. Je joue du piano
6. Je joue à l'ordinateur
7. Je ne fais rien
8. Je vais au cinéma



Music

Calypso = Calypso is a genre of music from Trinidad and Tobago. It originated in the struggle for emancipation from slavery. The words of calypso songs are witty and imaginative, and the music is upbeat and joyful. Emancipation = the freeing of someone from slavery.

Protest = objecting to something with words or actions.

Steel bands = a band made up of lots of steel pans. The tradition of playing steel pans comes from Trinidad and Tobago. In the UK, as well as in Trinidad, there is a competition each year to find the best steel band. Bands can grow to 100+ players. Lord Kitchener - A calypso king - Lord Kitchener's real name is Aldwyn Roberts and he is described as 'the grand master of calypso'.

Calypso Rose - A calypso queen - Calypso Rose was the first woman to win the Calypso Monarch competition.



PE

Hockey

Sweep pass - sweeping the whole length of the stick along the ground. The hands are at the top of the stick and power is generated by the swing of the wrists.

Drive Pass - used when trying to get the ball to a teammate who is further away on the field or to making a shot attempt on goal.

You can use a sweep and a drive pass to move the ball over longer distances.

Jab tackle and Block Tackle - knocking the ball out of the opponent's possession by placing the hockey stick on the ground, parallel to the ball

Strategies - A strategy is your team's overarching approach to being successful within the game, for example to try and soak up opposition pressure and play on the counter attack.

Tactics - Tactics are the specific actions or steps that the team takes to achieve the strategy, for example to pass the ball to the fast wingers, or for the attackers to support the defense in defensive situations.

Football

A Volley involves striking a ball that is still in the air. corner is taken if the ball is kicked off the back line by the opposition defending that goal. A goal kick must be taken from the floor at the 6-yard box if it goes off the back line. Offside is NOT played during 7 or 9 a-side matches. Players must not tackle another opponent if their intention is not to win the ball. Players must stand on their own half when the centre kick is being taken. When a goal is scored, the ball is restarted from the centre of the pitch. **Tactical understanding:** The basic positions in Football: goalkeeper, defenders, midfielders, forwards. Different positional play set ups for attacking and defending. How to use a formation, for example = 4-3-3.



RaWV

The key beliefs in Judaism are expressed in the Shema, the first prayer in the Torah. Most Jewish people believe the Torah is law, teaching guidance and is the most important object in the synagogue. The synagogue is a place of learning, worship and gathering. They live according to mitzvot in the Torah and remembering (Yom Kippur) which impacts their lives. . There are impacts of commitment to justice / living according to mitzvot in the Torah / remembering (Yom Kippur).

History

- The Maya were an ancient civilisation of people who lived in an area that used to be known as Mesoamerica. People had lived in the area from around 5000 BC and cities started to form in around 300 BC.
- The Mesoamerican people had a complex political system - a hierarchical government ruled by kings and priests.
- The Ancient Maya people were seen as innovators during this time period. The ancient Maya people developed a writing and number system; studied and charted the stars and planets; invented three complex calendars to keep track of time; built temples, palaces, monuments and cities; skilfully farmed the land and established a complex political system - a hierarchical government ruled by kings and priests.
- Beyond the creation myths, the Maya still identify strongly with their staple crop and the agricultural cycle is still used as an analogy for the cycle of life, death and rebirth and the succession of generations in a family. A reliable food supply was necessary for Ancient Maya civilisation to develop.
- Farmers in rainforests used the method called: Slash and Burn to clear rainforests and would then plant seeds in the ashes.
- Maize was an important crop, making up 80% of the Mesoamerican diet.
- Cacao beans were a key ingredient in Ancient Maya and used to represent the blood of Gods.

Computing

- Logical reasoning determines if algorithms will work by predicting what happens when the algorithm's steps - and the rules they consist of - are followed.
- Variables are used in computer programming to store information. Variables could be used to store the score in a game, the number of cars in a car park or the cost of items on a till.
- Different strategies to limit the impact of technology on health are things such as: night-shift mode, regular breaks, correct posture, sleep, diet and exercise
- Systems that regulate age-related content look at the suitability and content of a game/website (not how challenging a game is) to advise parents whether they are appropriate for children.

Art

Atmosphere - the pervading tone of creative work

Symbolise - represent by means of symbols

Mastery - comprehensive knowledge or skill in a particular subject

Evocative - bringing strong images memories or feeling to life

Annotating sketches shows thought processes and artistic choices made

- Masks played a central role in Mayan culture and were used for different occasions and purposes – events, celebrations and deaths.
- Joining means uniting materials and techniques. An Armature is an open framework on which a sculpture is moulded.
- Modroc is a plaster bandage that is used for modelling, casting and crafting.
- A piece of work can be adapted based on feedback provided by self and peer assessment.
- Jess Riva Cooper is an artist and educator based in Toronto, Canada. She integrates colour, drawing, and clay to create sculptures.



1100 BC Hunter gatherers settle along the Pacific coast.	1100 BC Settlements begin to appear.	700 BC Maya writing is developed	100 BC The first Maya Pyramids are built.	900 -1200 AD El Castillo is built.	250 AD Beginning of the Classic Period.	1000 AD Chichen Itza is the most powerful city.	1502 AD First contact with Europe.
---	---	---	--	---	--	--	---